

September 2021

Dear Parent/Carer

We are very much looking forward to welcoming prospective new parents to Deer Park School's Open Evening and Open Days. While we are clearly only in the early stages of our journey, having only opened on the 2<sup>nd</sup> September, it will be an opportunity to see the school and the facilities on offer to our students. We currently have 124 students in Year 7, some of whom you will see in the evening or during the tours.

During the evening there will be an opportunity to hear about the Wildern Academy Trust, the vision and plans for Deer Park moving forward and information about the admissions process. The senior team will be available along with a small but wonderful current staff to answer questions. You will be able to wander around the main building exploring the space and look at some of the fabulous facilities we have. There may be some students present in key areas for you to chat to but as you will appreciate this may be less than usual due to being so early in the school's journey. We would ask that parents kindly wear masks when seated in the hall for the presentations.

Accessing the site is something that has been carefully planned predominantly using one of the four designated walking routes. Attached to this letter is a map indicating what they are depending on which direction you will be coming from. Our students are using these routes now every day and are encouraged to do so as part of their travel to school.

We currently have very limited parking on site due to the road development and further extensions to the school's sports facility. We are **unable to offer any parking for these events in the school car park** except for accessibility parking which have designated bays.

There is an old works compound to the left of Sika Avenue as you approach the school, this is **not an official car park** and parking is at the owners personal risk. There are lined spaces but please ignore the arrows as this was for its previous use, you may find it easier to reverse into the spaces.

There is also parking at the car park off Pavilion Road (SO30 2ZS) near Woodhouse Lane Skate Park which gives access to the green walking route.

For the evening only we have very kindly been offered the use of the Hillier's car park in Woodhouse Lane. We must stress this has been offered for the **evening event only** and during the day this is a business and we do not have access. We would ask you to kindly respect this as their generosity for the evening is very helpful to all of us and we would not wish to abuse their goodwill. We cannot wait to work closely with Hillier's as the school grows - they are an outstanding business within the community and this is just one example of how supportive they have been of the school.

Given these unfortunate limitations we are asking parents to walk where possible using one of the designated routes to both the open morning and evening events. This will be a huge support and prevent any parking frustrations.

We are now asking for an indication of who will be attending so we can manage the programme carefully, especially during the open mornings. Please visit [www.deerparksecondary.org](http://www.deerparksecondary.org) and navigate to the Open Evening 2021 page to complete the Expression of Interest Form.

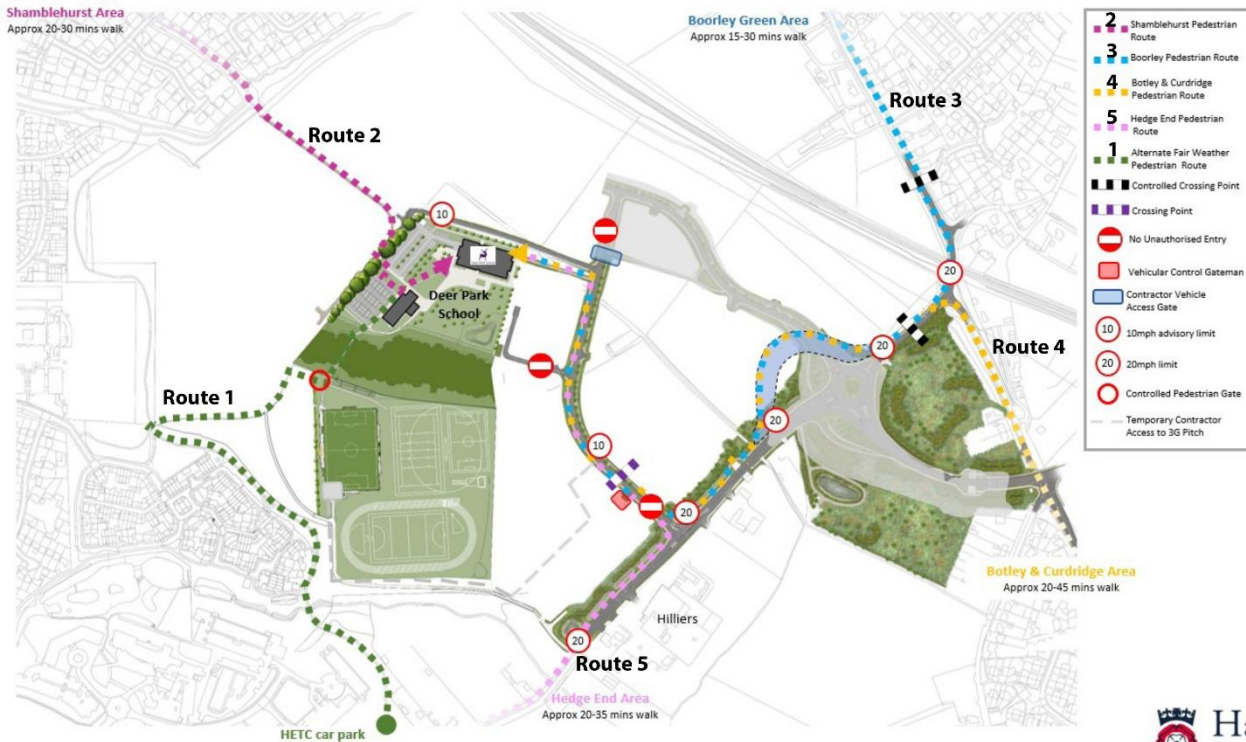
Thank you for your understanding and support. We look forward to meeting you at one of the events and for you to experience the wonderful culture and ethos that the students are creating at Deer Park. They are making it a very special place to be.

Yours faithfully



Miss M L Litton  
Executive Headteacher

## Deer Park School - Safer Routes



### Pedestrian Routes

The school is supported by The Pedestrian Safety Working Group, which consists of the following Hampshire County Council departments

- Children Services
- Property Services
- Economy Transport & Environment
- Engineering Consultancy

